

Project Overview



NYSCO Products, LLC Hawthorne, NY

MBCEA 2018 Award of Merit, Warehouse Category

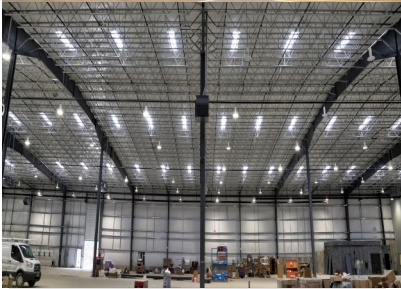


Hance Construction coordinated design, fabrication and erection of this 74,000 SF warehouse with 8,000 SF of office space in Hawthorne, New York. The building is a 216' wide space with minimal interior columns (2 rows), utilizing 50' Butler Landmark 2000 truss purlins.

Roof thermal efficiency was achieved using Butler Manufacturing's TBS insulation system which permits double-layer insulation with minimal compression. 72 Sunlite Strip skylights were installed to reduce artificial lighting requirements.



The E-shadow wall wall panels were installed as a two-piece, two-tone accent, which presented a challenge as the panels stand off of the wall girts using two inch thermal blocks, making precise alignment more difficult. To add to the complexity, the masonry foundation was stepped to retain the natural slope of the exterior jobsite. These E-shadow wall panels transition to 4" textured Thermawall panels at the office space for added dimension. The varying thickness of the wall systems required different girt depths so all exterior surfaces lined up.



Features, Challenges, Accomplishments:

E-shadow wall with wainscoted two-tone panels over stepped masonry foundation

E-shadow wall transitioned to textured Thermawall panels at office mezzanine / lean-to

72 Butler skylights installed in the new Butler TBS roof system

5,200 sq/ft welded mezzanine for office space

*"Tailored Construction
Services"*

HANCE
CONSTRUCTION, INC.

2171 Route 57
Washington, NJ 07882

Phone: 908-835-3501

Fax: 908-835-3502

info@hanceconstruction.com

www.hanceconstruction.com



Square Footage: 74,000 sq/ft Warehouse with 8,000 sq/ft Office Space

Eave Height: 32'

Roof System: Butler MR-24 with Skyweb II & TBS insulation system

Wall System: Butler E-Shadowwall and 4" Thermawall

Project Completion Date: December 2017

